

***CONSTRUCTION GUIDE***

***SAMPLE PLANS***



***Joshua Woodsman***  
***www.pintphouses.com***

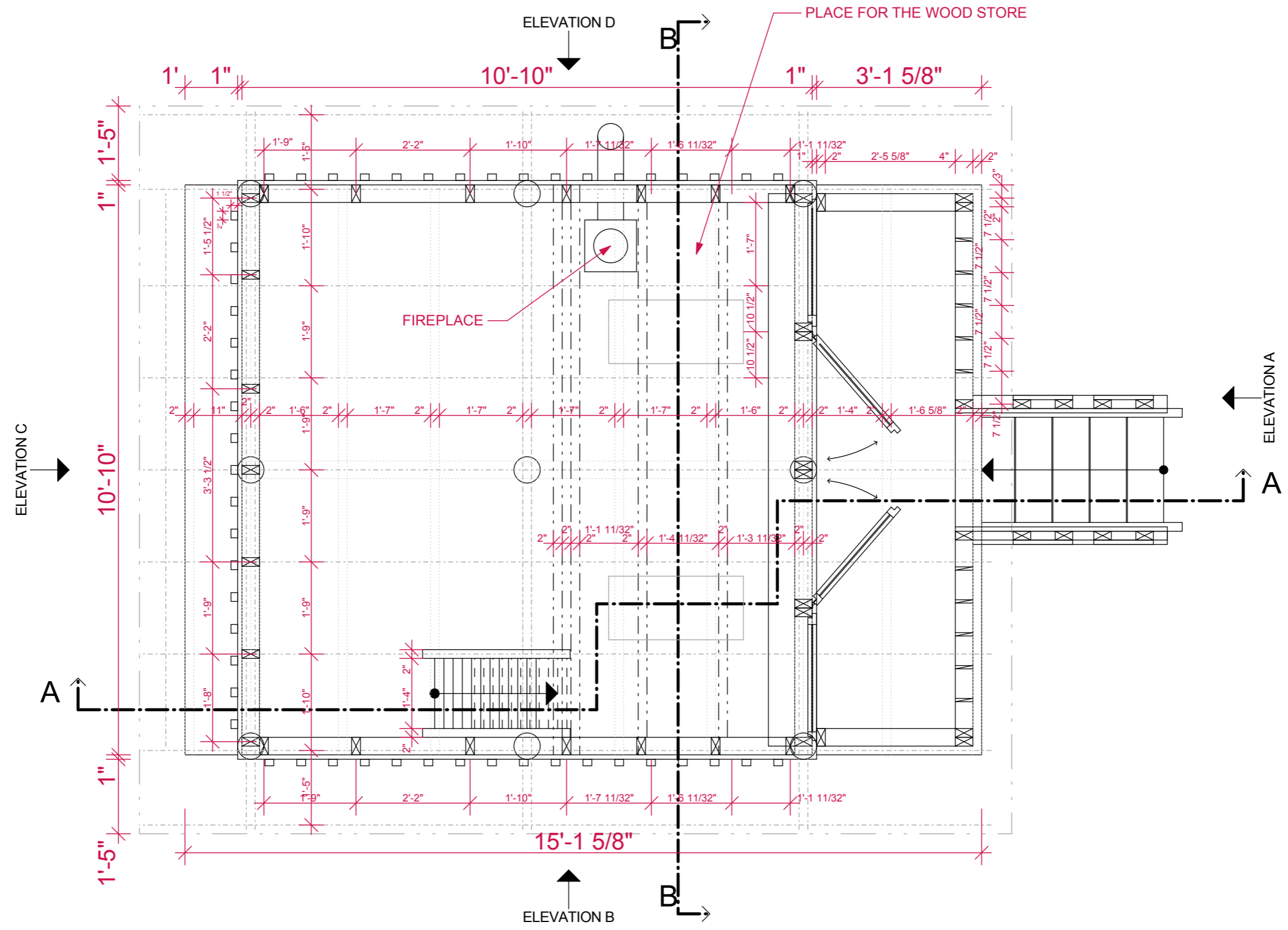
## **Please Note**

**This electronic document is protected by the identifier. Against unauthorized dissemination on the Internet.**

Before building any structure be sure to check with your local authorities. In many communities permits are not needed when building tiny buildings like sheds but the rules range widely so it's best to research your local restrictions before building anything. Also please note that these plans were not prepared by or checked by a licensed engineer and/or architect. Build from these plans at your own risk.

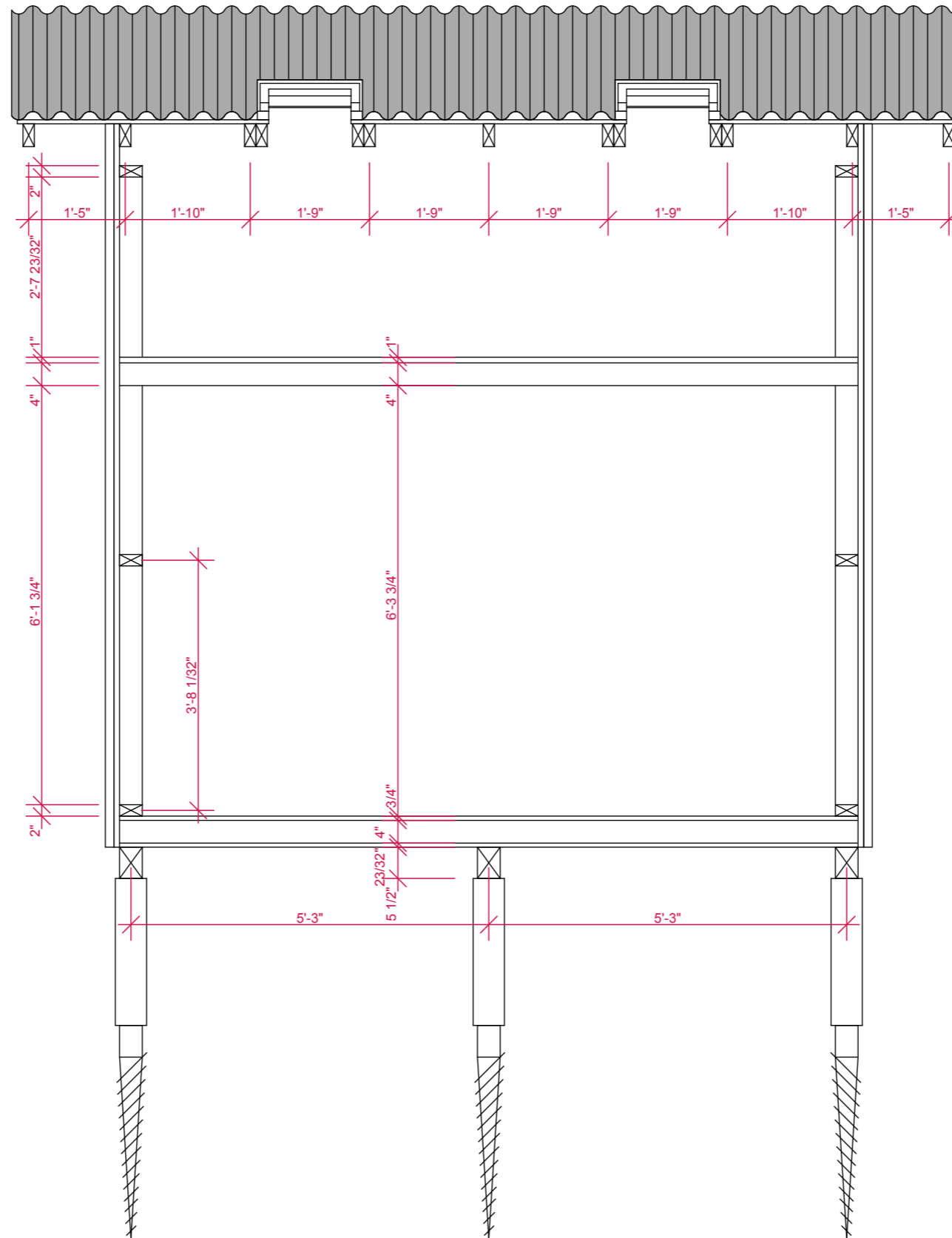
LAYOUT	
SECTIONS	3-4
ELEVATIONS	7-14
<hr/>	
CONSTRUCTION PROGRESS	13-38
MATERIAL LIST	13-38
TOOL LIST	39-40

CONTENTS

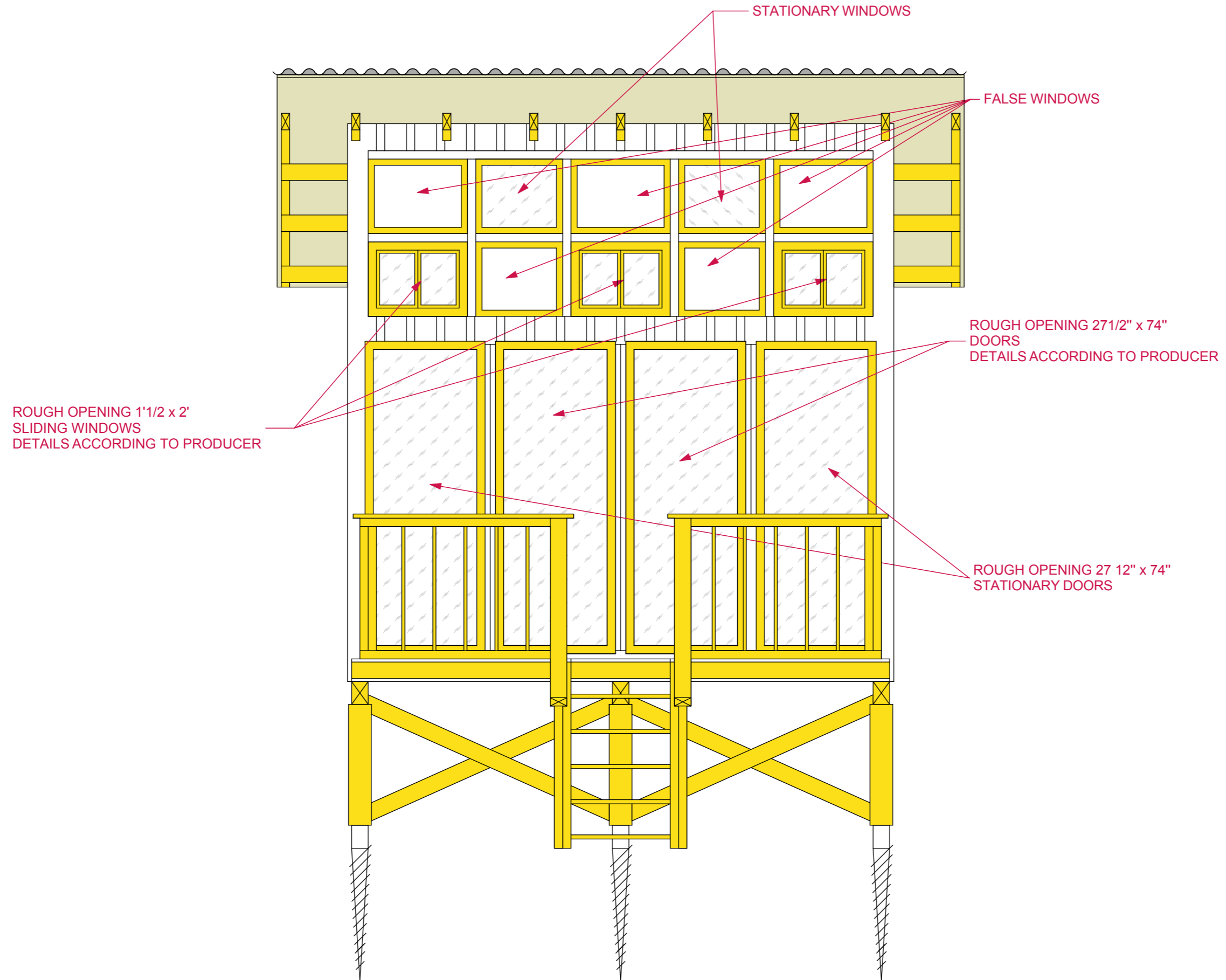


LAYOUT  
1:25

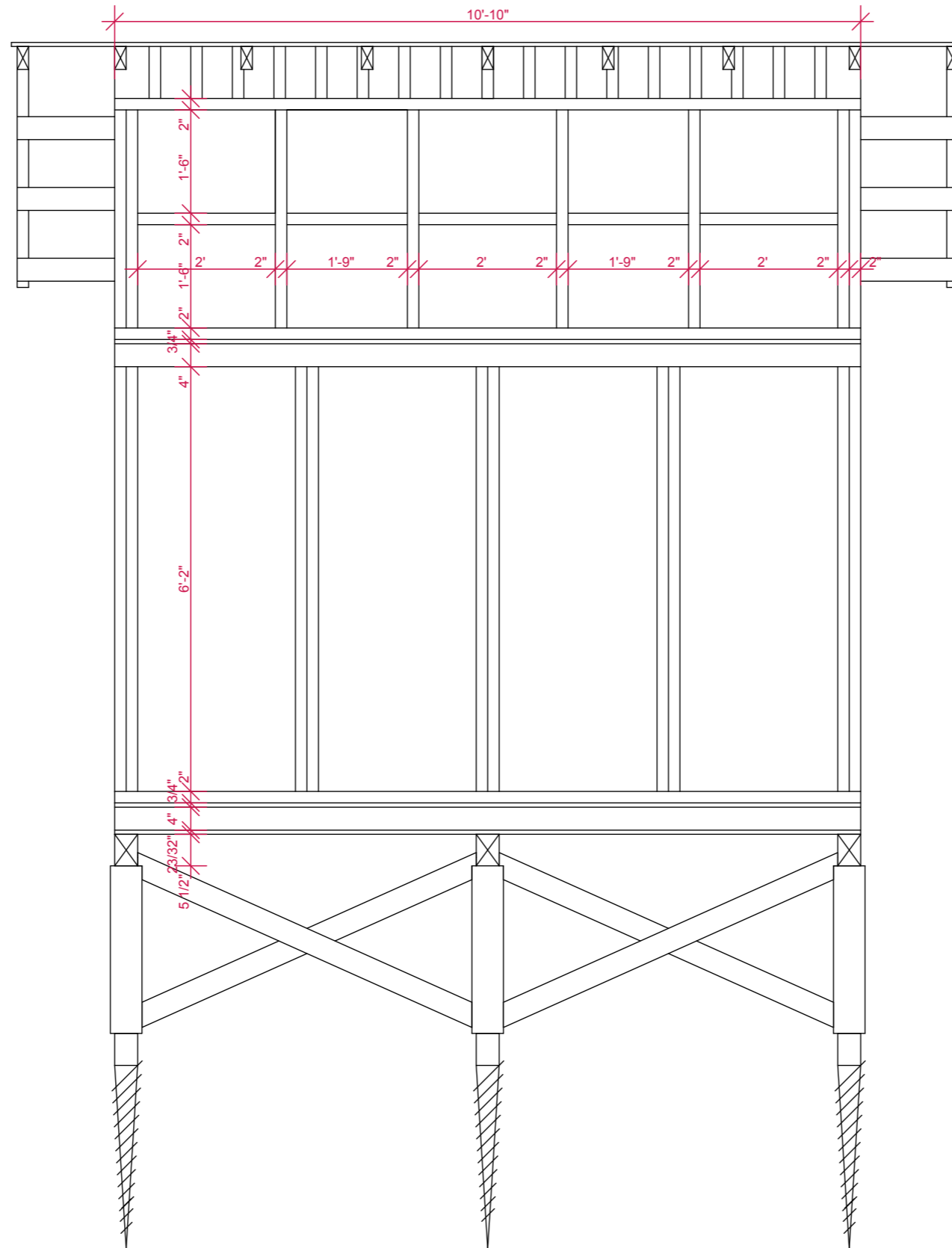




SECTION B  
1:25

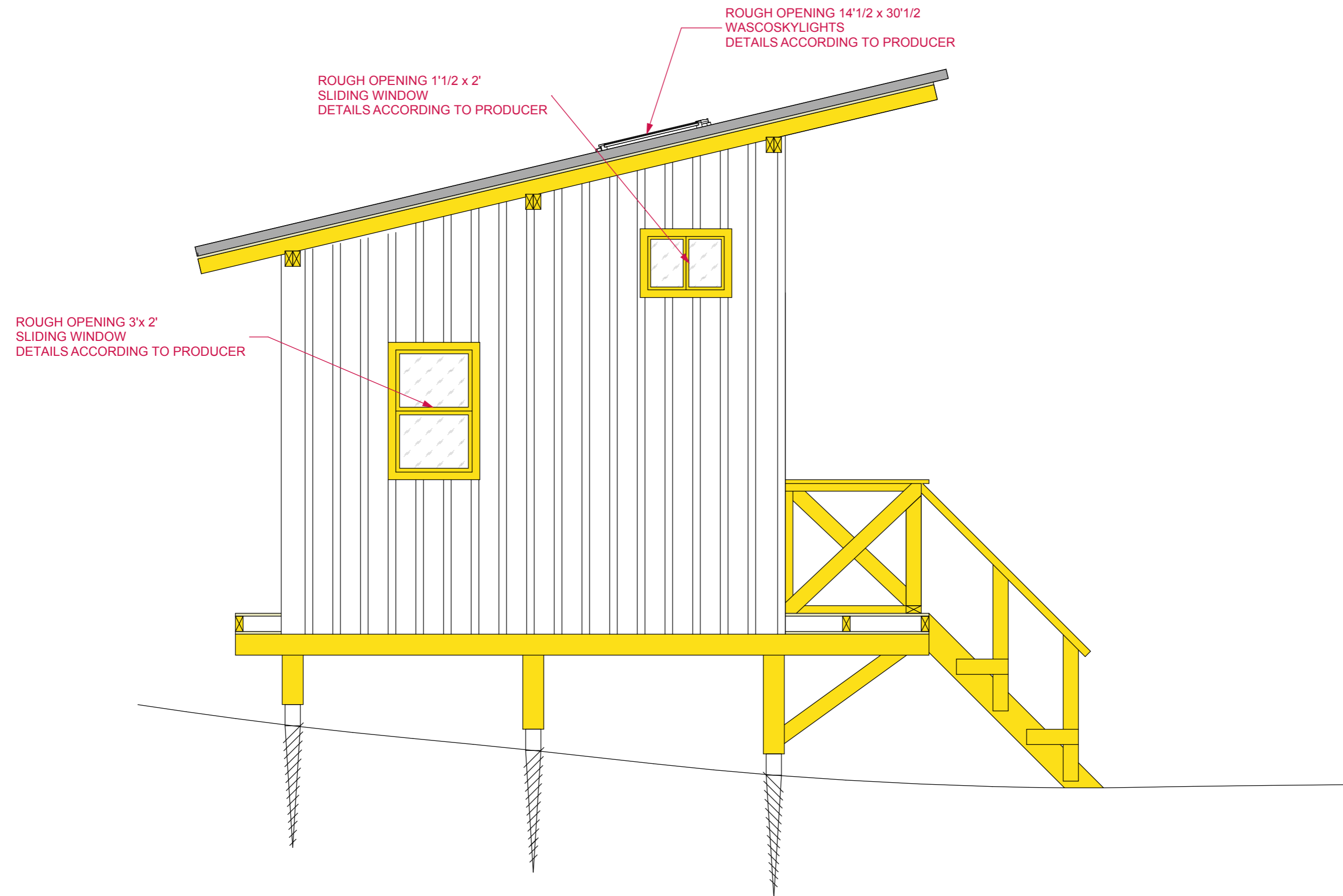


ELEVATION A  
1:25

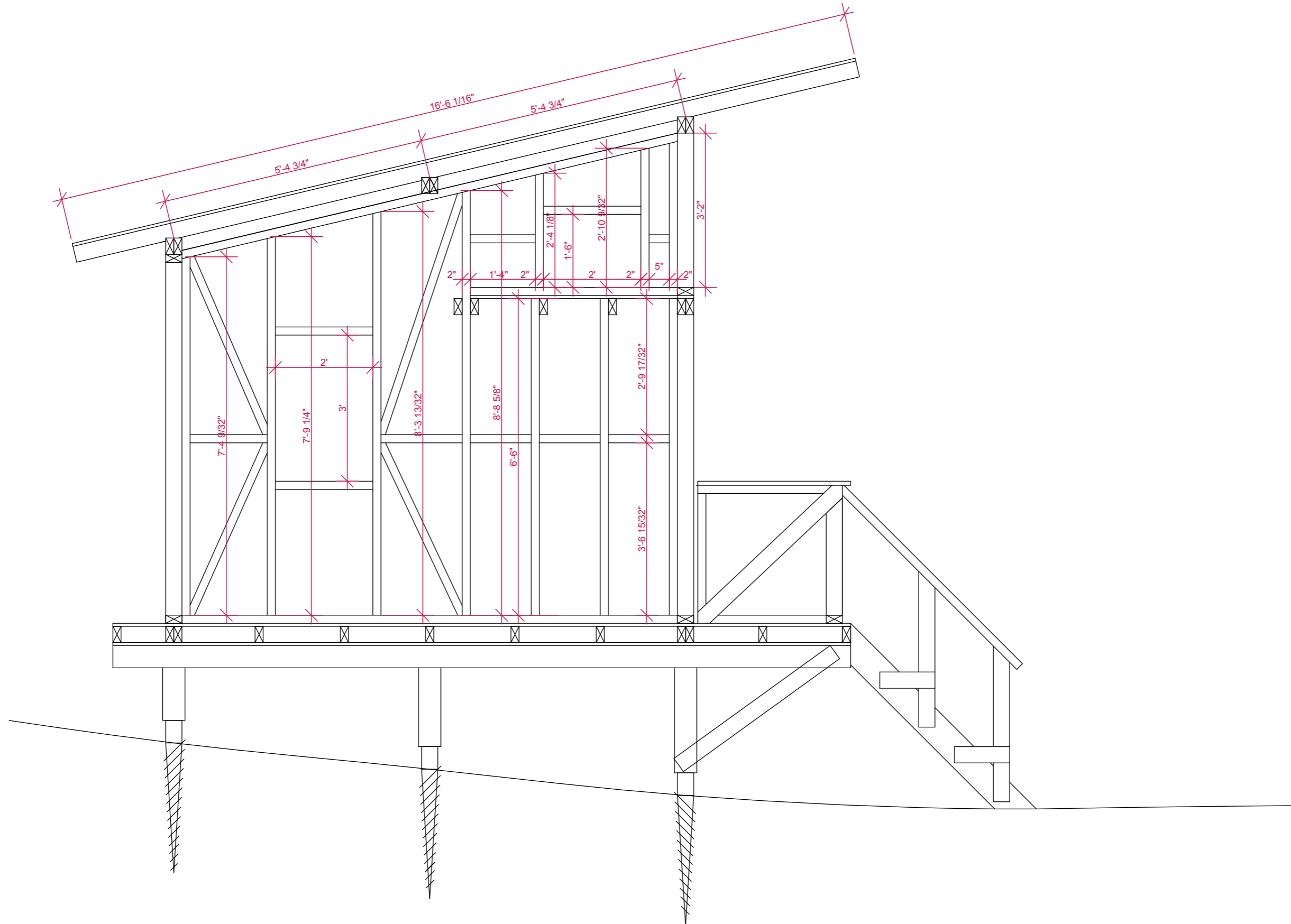


ELEVATION A  
1:25

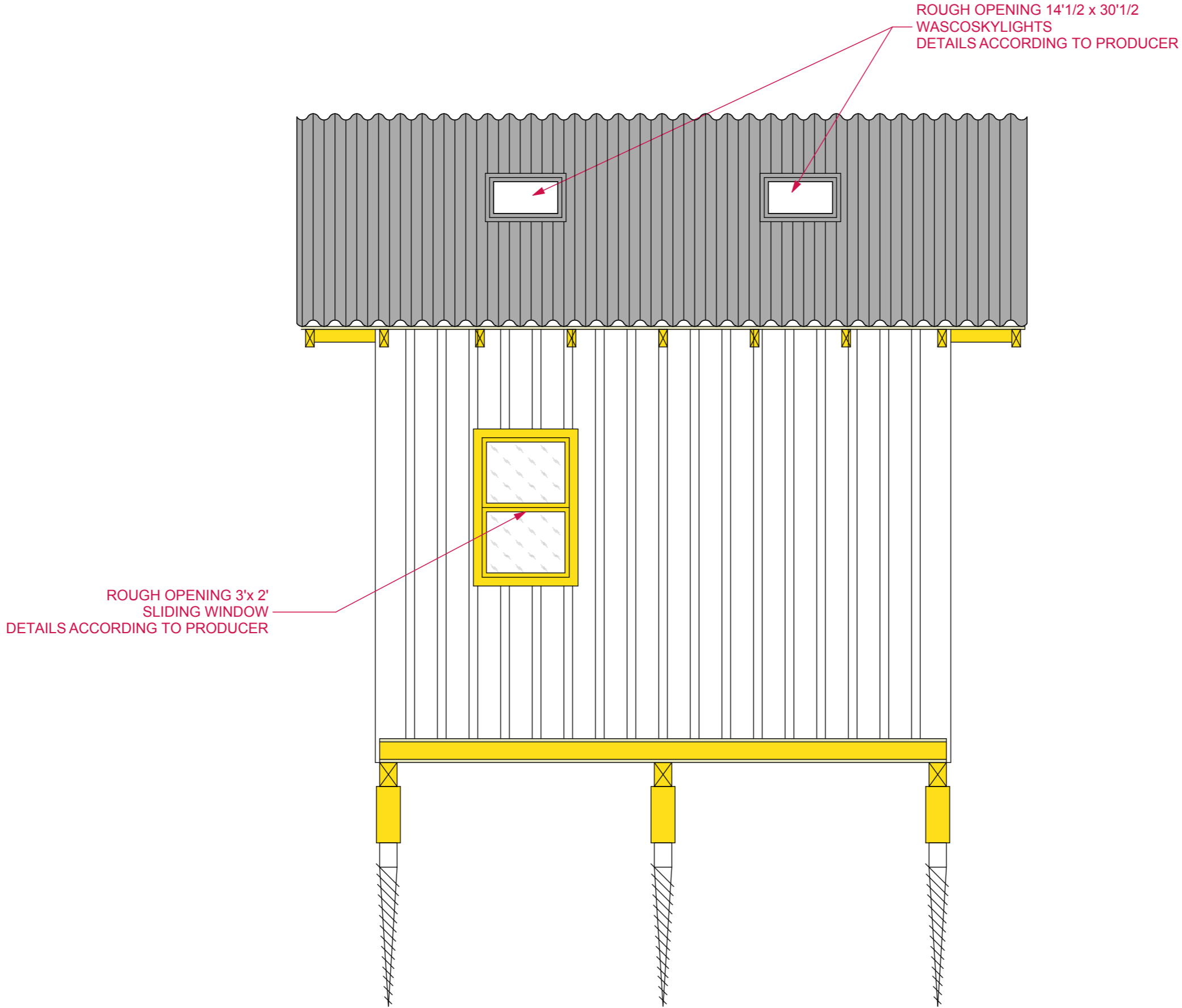




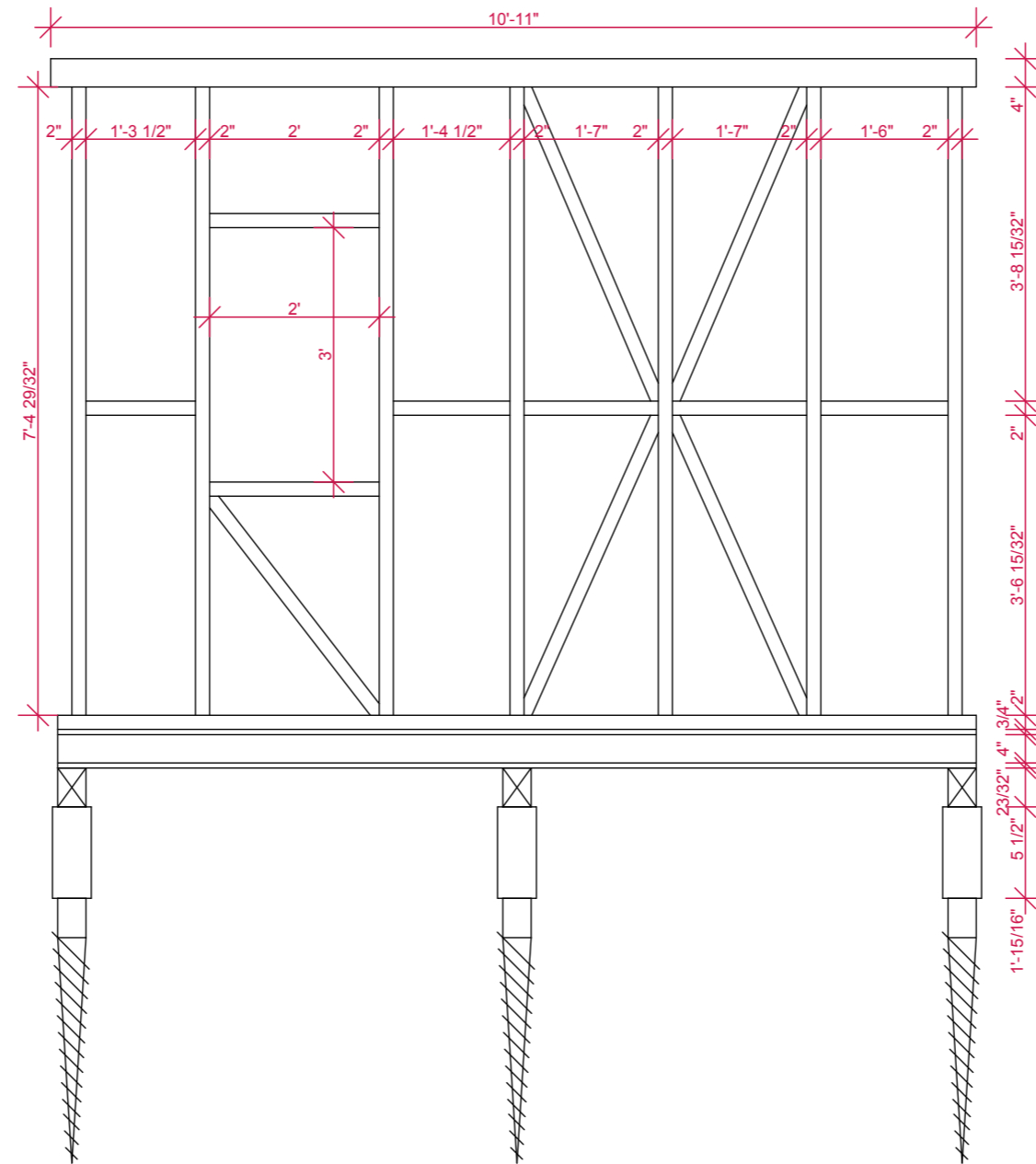
ELEVATION B  
1:25



ELEVATION B  
1:25



ELEVATION C  
1:25

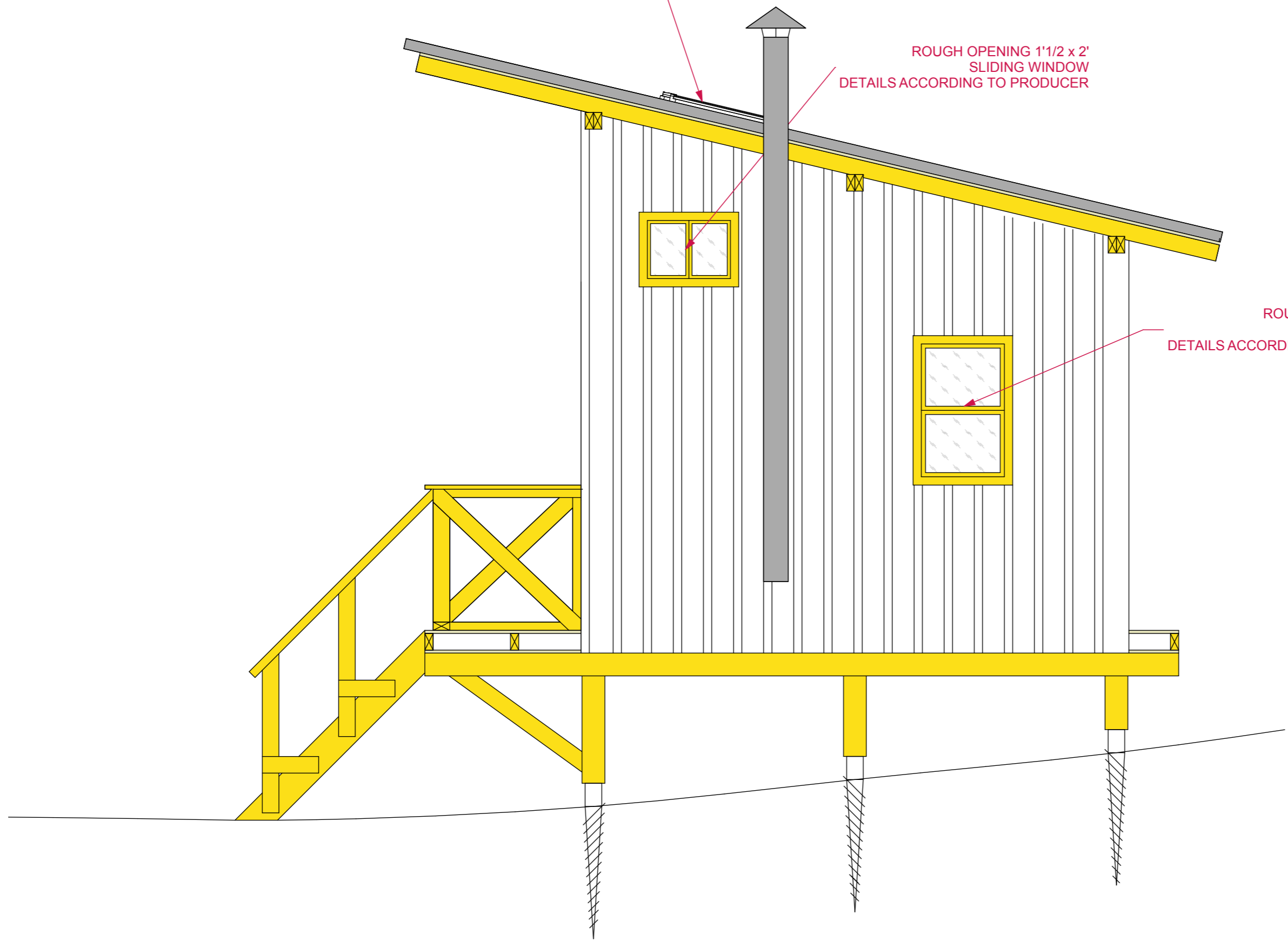


ELEVATION C  
 1:25

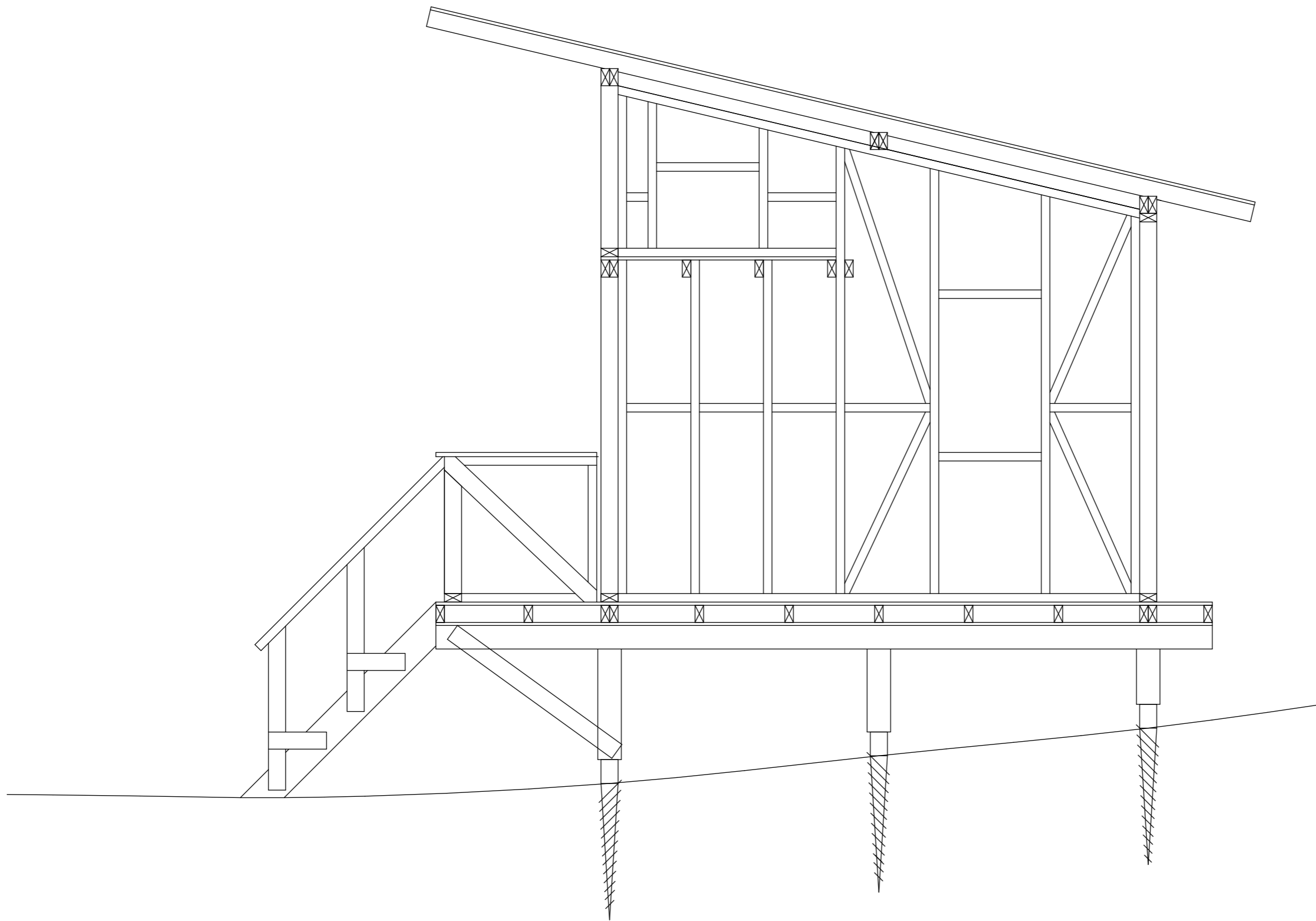
ROUGH OPENING 14'1/2 x 30'1/2  
WASCOSKYLIGHTS  
DETAILS ACCORDING TO PRODUCER

ROUGH OPENING 1'1/2 x 2'  
SLIDING WINDOW  
DETAILS ACCORDING TO PRODUCER

ROUGH OPENING 3'x 2'  
SLIDING WINDOW  
DETAILS ACCORDING TO PRODUCER



ELEVATION D  
1:25



ELEVATION D  
1:25



## GROUND SCREWS

Ground screws eliminate the need for concrete and allow foundations to be set within minutes, not hours. Use a spirit level to make the same height of each screw. Check the local rules for the foundations.

Material list:

9 x ground screws

9x wooden column (length depends on the slope)  
about Ø 8 inches

GROUND SCREWS

It is necessary to measure the exact dimensions of all the structural elements directly at the construction site!

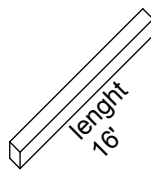


**BEARERS**

Place the bearers on the ground screws and level them out using the level tool.

Material list:

3x

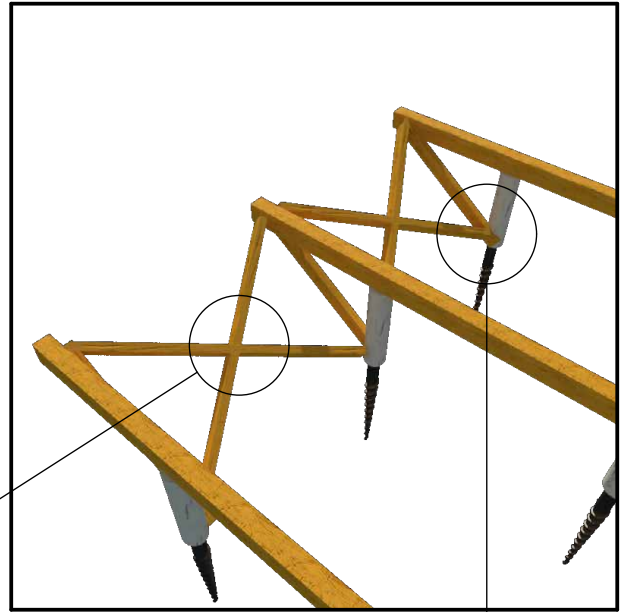


profile  
4" x 5-1/2"

**BEARERS**

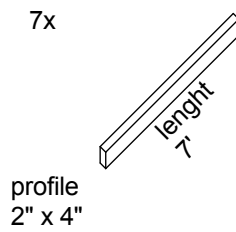
It is necessary to measure the exact dimensions of all the structural elements directly at the construction site!





BRACING  
Place the bracing.

Material list:



BRACING

It is necessary to measure the exact dimensions of all the structural elements directly at the construction site!



OSB board  
place osb board

Material list:  
180 ft<sup>2</sup> osb; thickness 23/32"

OSB BOARD

It is necessary to measure the exact dimensions of all the structural elements directly at the construction site!



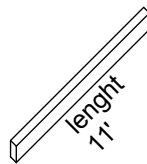
**JOISTS**

The next step is to distribute the floor joists according to the layout plan.

Material list:

12x

profile  
2" x 4"



**JOISTS**

It is necessary to measure the exact dimensions of all the structural elements directly at the construction site!



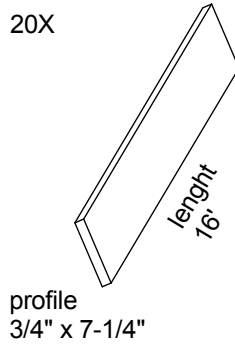
INSULATION  
Place the insulation.

INSULATION



DECKING  
place the floor decking

Material list:



DECKING

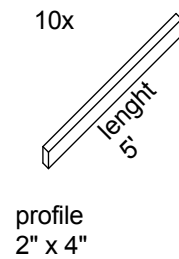
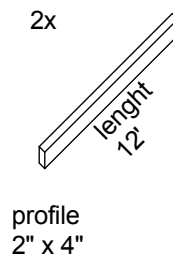
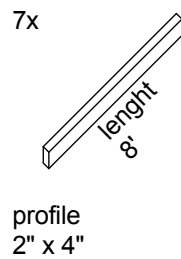
It is necessary to measure the exact dimensions of all the structural elements directly at the construction site!



**BACK WALL**

Distribute the lower plates. In the next step, the vertical studs will be attached to them  
Place the studs. Place the plates and also some temporary bracing in case it's necessary. Level the structure using the level tool.

**Material list:**



**BACK WALL**

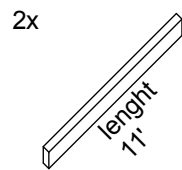
It is necessary to measure the exact dimensions of all the structural elements directly at the construction site!



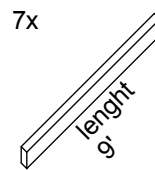
**RIGHT WALL**

Distribute the lower plates. In the next step, the vertical studs will be attached to them  
Place the studs. Place the plates and also some temporary bracing in case it's necessary. Level the structure using the level tool.

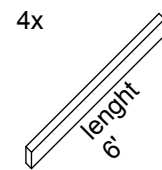
Material list:



profile  
2" x 4"



profile  
2" x 4"



profile  
2" x 4"

**RIGHT WALL**

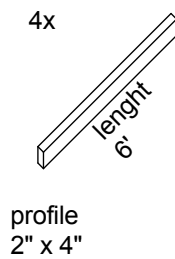
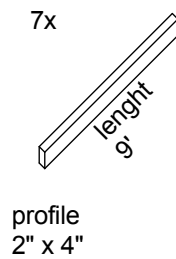
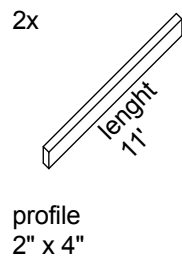
It is necessary to measure the exact dimensions of all the structural elements directly at the construction site!



**LEFT WALL**

Distribute the lower plates. In the next step, the vertical studs will be attached to them  
Place the studs. Place the plates and also some temporary bracing in case it's necessary. Level the structure using the level tool.

Material list:



**LEFT WALL**

It is necessary to measure the exact dimensions of all the structural elements directly at the construction site!

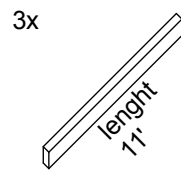




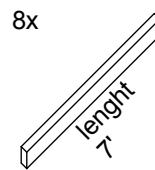
**FRONT WALL**

Distribute the lower plates. In the next step, the vertical studs will be attached to them  
Place the studs. Place the plates and also some temporary bracing in case it's necessary. Level the structure using the level tool.

Material list:



profile  
2" x 4"



profile  
2" x 4"

**FRONT WALL**

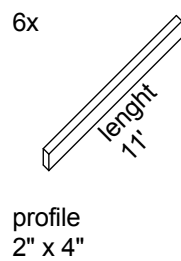
It is necessary to measure the exact dimensions of all the structural elements directly at the construction site!



**LOFT JOISTS**

The next step is to distribute the loft joists according to the layout plan.

Material list:



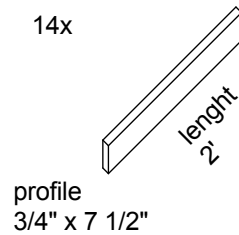
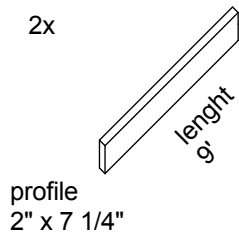
**LOFT JOISTS**

It is necessary to measure the exact dimensions of all the structural elements directly at the construction site!



STAIRS  
Place the stairs. Anchor the interior stairs to the floor joists.

Material list:



STAIRS

It is necessary to measure the exact dimensions of all the structural elements directly at the construction site!

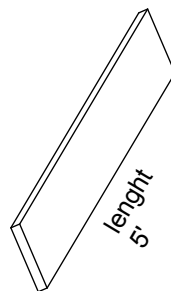


DECKING  
place the floor decking

Material list:

profile  
3/4" x 7"

20X



profile  
3/4" x 7-1/4"

DECKING

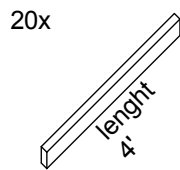
It is necessary to measure the exact dimensions of all the structural elements directly at the construction site!



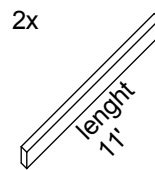
**LOFT WALL**

Distribute the lower plates. In the next step, the vertical studs will be attached to them  
Place the studs. Place the plates and also some temporary bracing in case it's necessary. Level the structure using the level tool.

**Material list:**



profile  
2" x 4"



profile  
2" x 4"

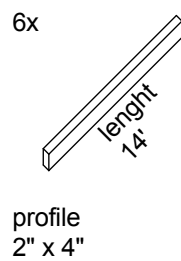
**LOFT WALL**

It is necessary to measure the exact dimensions of all the structural elements directly at the construction site!



RAFTERS  
Place the rafters.

Material list:



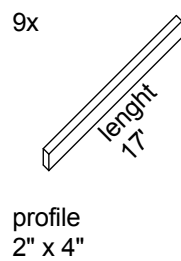
RAFTERS I

It is necessary to measure the exact dimensions of all the structural elements directly at the construction site!



RAFTERS  
Place the rafters.

Material list:



RAFTERS II

It is necessary to measure the exact dimensions of all the structural elements directly at the construction site!



Sheating  
nail roof sheating to the roof structure

Material list:  
250 ft<sup>2</sup> osb; thickness 23/32"

SHEATING

It is necessary to measure the exact dimensions of all the structural elements directly at the construction site!





#### CORRUGATED METAL SHEET

Cover the roof sheathing by a corrugated metal sheet.

Place the corrugated sheet so that it will overlap the OSB board by two inches.

Material list:

250 ft<sup>2</sup>

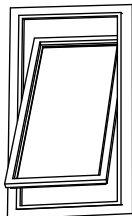
ROOF

It is necessary to measure the exact dimensions of all the structural elements directly at the construction site!

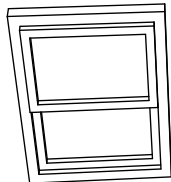


2 x STATIC WINDOWS  
rough opening 1' 6" x 1' 9"

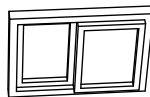
**OPENINGS**  
Place the openings.



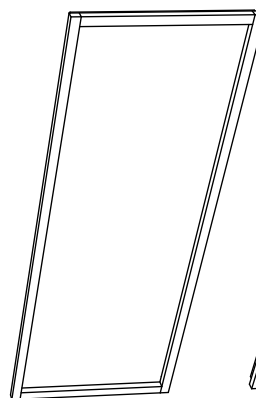
2 x SKYLIGHTS  
rough opening 14' 1/2 x 30' 1/2



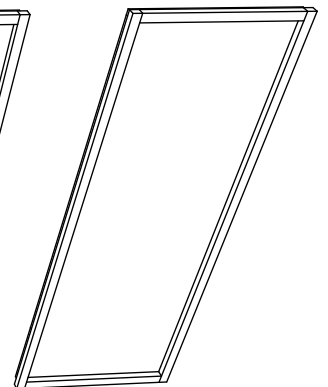
3 x SLIDING WINDOW  
rough opening 3' x 2'



5 x SLIDING WINDOW  
rough opening 3' x 2'



2 x DOORS  
rough opening 27' 1/2' x 6' 2"



2 x STACIONARY DOORS  
rough opening 27' 1/2' x 6' 2"

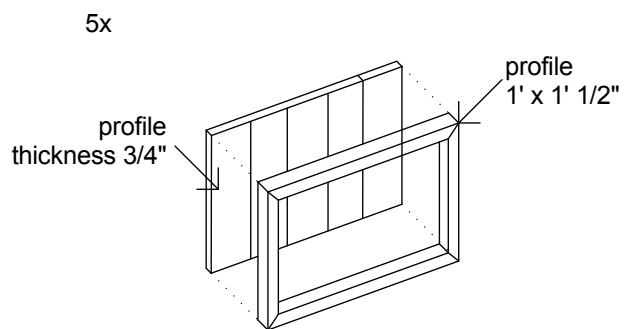
The details for affixing the skylights are included in the manufacture's manual.  
The details for the construction of the roof chimney with spark arrestor can be found in the chimney's / arestor manual.  
Before making the doors/windows it is necessary to measure rough opening dimensions.  
If you buy pre-made doors/windows, it is necessary to adjust the rough sizes to the dimensions of the openings.

It is necessary to measure the exact dimensions of all the structural elements directly at the construction site!

**OPENINGS**



FALSE WINDOWS:  
False windows can be made according to the pictorial diagram.



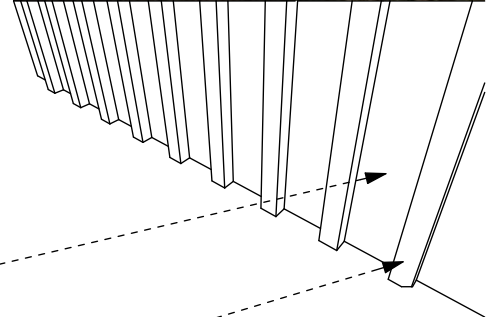
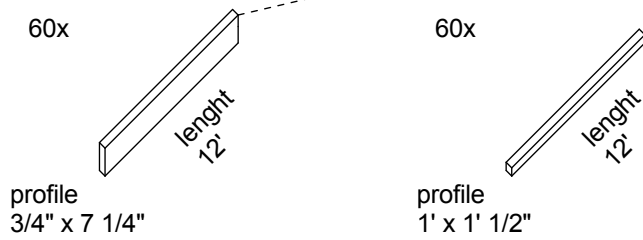
FALSE WINDOWS

It is necessary to measure the exact dimensions of all the structural elements directly at the construction site!



**CLADDING**  
Use boards to clad the whole shed.

Material list:

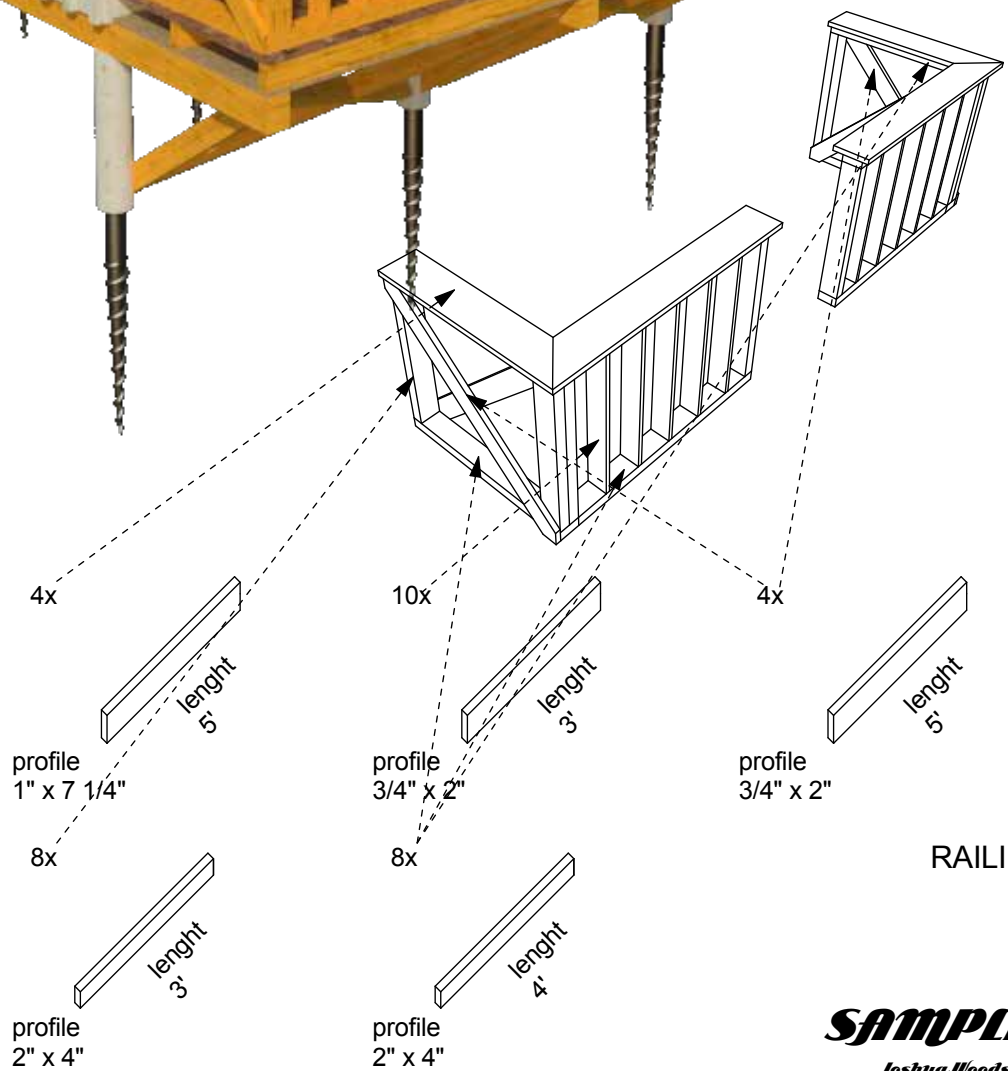


**CLADDING**



**RAILING**  
Place the railing.

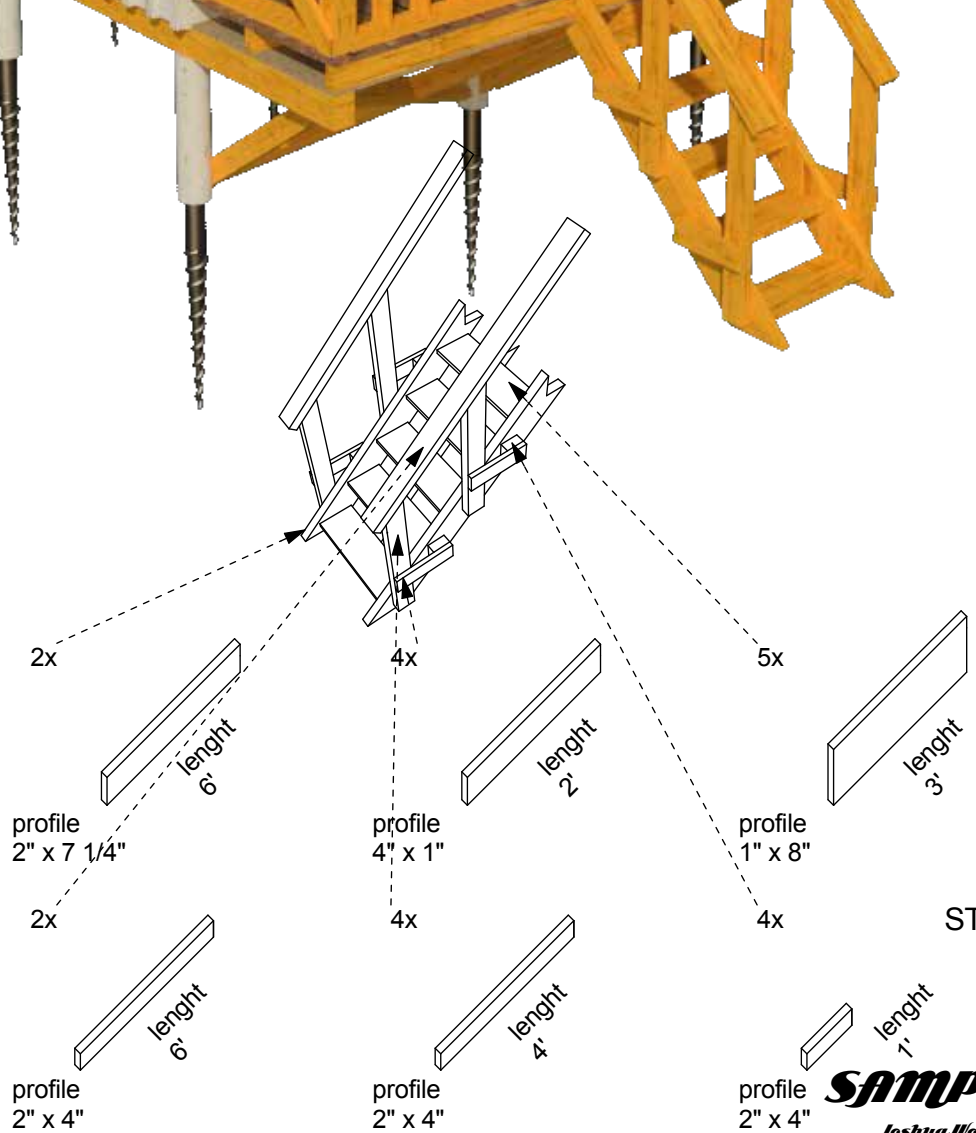
Material list:





STAIRS  
Place the stairs.

Material list:



STAIRS

**SAMPLE**

Joshua Woodsman  
www.pintphouses.com



TOOL LIST A



TOOL LIST B